



9 Carthew Terrace



9 Carthew Terrace

St. Ives, Cornwall TR26 1EB

Town Centre & Harbour - 0.5 mile Porthmeor Beach - 0.3 mile

Train Station - 0.7 mile

A handsome granite faced
period townhouse renovated to
a high standard with parking and

- NO ONWARD CHAIN
- 3/4 Parking Spaces
- Outstanding Sea Views
- Family Bathroom
- Immaculately Presented
- Lovely Courtyard Garden
- 4 Bedrooms (1 En-Suite)
- Underfloor Heating

Guide Price £1,150,000

SITUATION

Overlooking the 'Blue Flag' beach at Porthmeor, Carthew Terrace occupies a fantastic position with magnificent elevated views over the beach, out to sea and along miles of the North Cornish Coast. Situated in the shadow of the iconic Tate St Ives Gallery, Porthmeor is a sandy, safe beach, popular with surfers and swimmers alike.

A short stroll takes you to the maze of narrow streets lined by fisherman's cottages together with an eclectic range of shops, quality restaurants and galleries. The picturesque granite harbour is of course a focal point for many, complete with local fishing boats that still moor alongside the piers and its own sandy beach.

At nearby Lelant, overlooking the Hayle Estuary, there is a spectacular Links Golf Course with views stretching up towards Godrevy Lighthouse. A scenic branch railway line links Carbis Bay and St. Ives with the main London to Penzance line at nearby St. Erth.

THE PROPERTY

A short walk from the harbour and Porthmeor Beach, No 9 Carthew Terrace offers beautifully proportioned accommodation arranged



SERVICES

Mains water, electricity, gas and drainage.

Gas central heating.

Underfloor heating.

Cat 5 networked throughout.

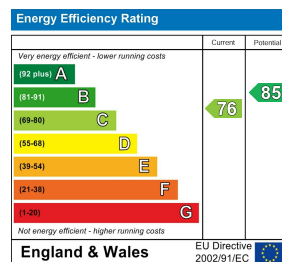
DIRECTIONS

Proceed towards Porthmeor Beach along Alexandra Road and turn left into Carthew Terrace. Continue down this no-through road and after bearing sharp left, No.9 will be evident on the left with parking on the opposite side of the road.

VIEWING

Strictly and only by prior appointment with Stags' Truro office on 01872 264488.

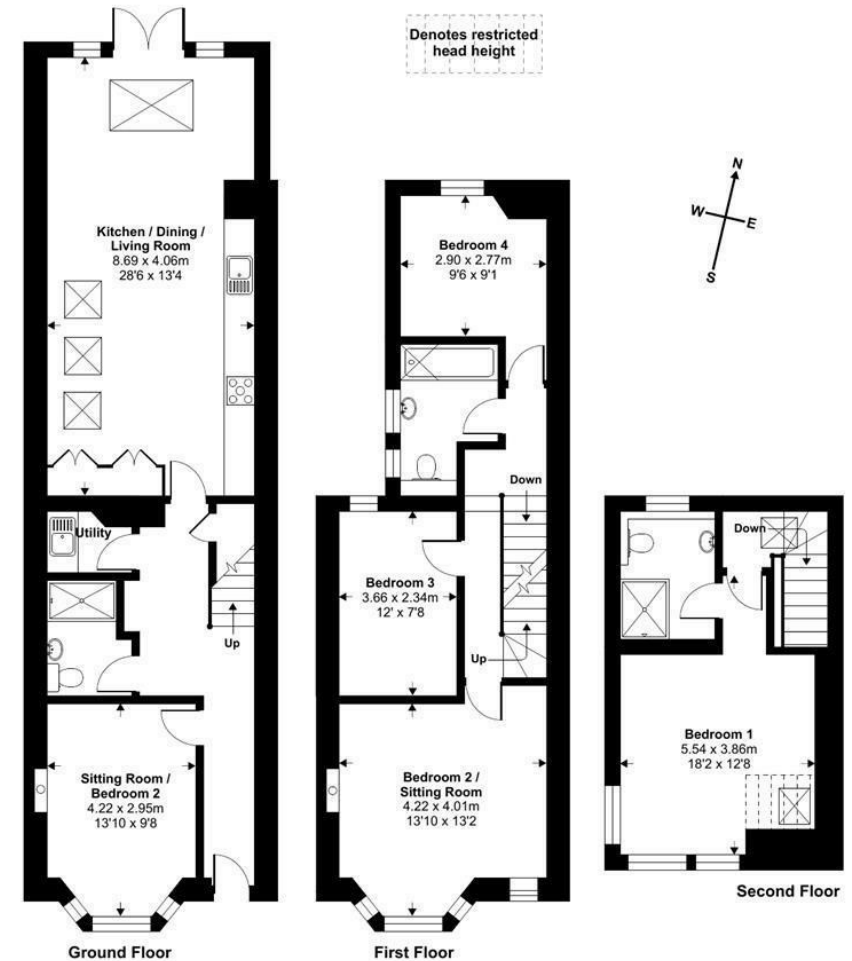




61 Lemon Street, Truro, TR1 2PE

truro@stags.co.uk

01872 264488



RICS Certified Property Measurer
 Floor plan produced in accordance with RICS Property Measurement Standards incorporating International Property Measurement Standards (IPMS2 Residential). © nichecom 2022.
 Produced for Stags, REF: 796298



@StagsProperty

Cornwall | Devon | Somerset | Dorset | London